

# Rollstuhlanbau

- TLite
  - Aero

**TLite**

Aero



**HAND BUILT**  
**IN THE USA**

[www.tilite.com](http://www.tilite.com)

**Ti**

**LITE**

TiLite

**Aero** 

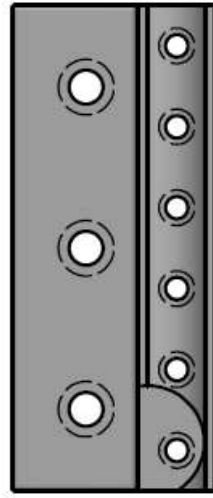
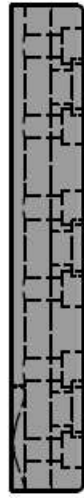
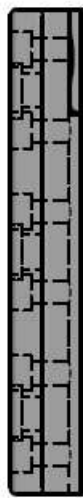
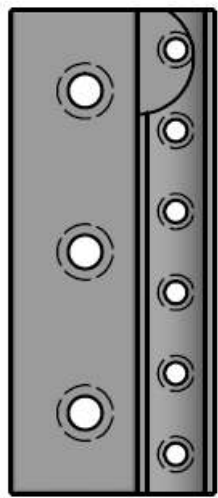








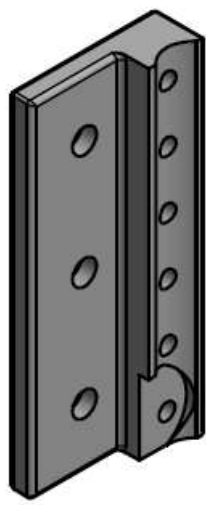
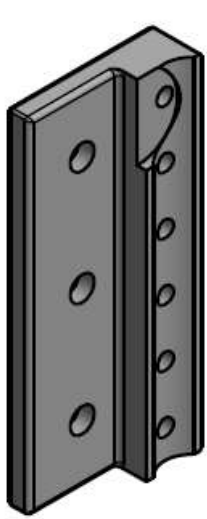




Pro Halterung und Seite:  
 Grundplatte 10 abgeändert  
 2 x DIN 7991 M6x45 + U-Scheibe + S-Mutter  
 2 x DIN 7991 M8x30 + S-Mutter  
 Rohrdurchmesser vorn :  
 Rohrdurchmesser hint :

Linke Halterung

Rechte Halterung



				Maßstab 1:2	
				Rehatechnik Heymer	
		Datum	Name		Titel
		Gezeichnet	07.01.2015	R. Heymer	
		Kontrolliert			
		Norm			
				Aerox	
				1	
				A4	
Status	Änderungen	Datum	Name		

